

PULP MAGAZINE COVER

This vintage-style prop cover can be attached to a current issue of *Weird Tales*, although it should also fit any of a number of other magazines. The technique for finishing it depends on whether the magazine you're attaching it to has a stapled spine (aka "saddlestitched") or a thick glued spine (aka "perfect bound").

For saddlestitched magazines (e.g. *Weird Tales*)

Print on glossy white paper, if possible.
Trim away left edge of paper at the red dashed line.
Trim away other white areas of the paper.
Cut off most of the cover of your selected magazine, leaving behind a flap about a half inch wide at the spine.
Glue the left edge of the prop cover to the magazine's cover flap.

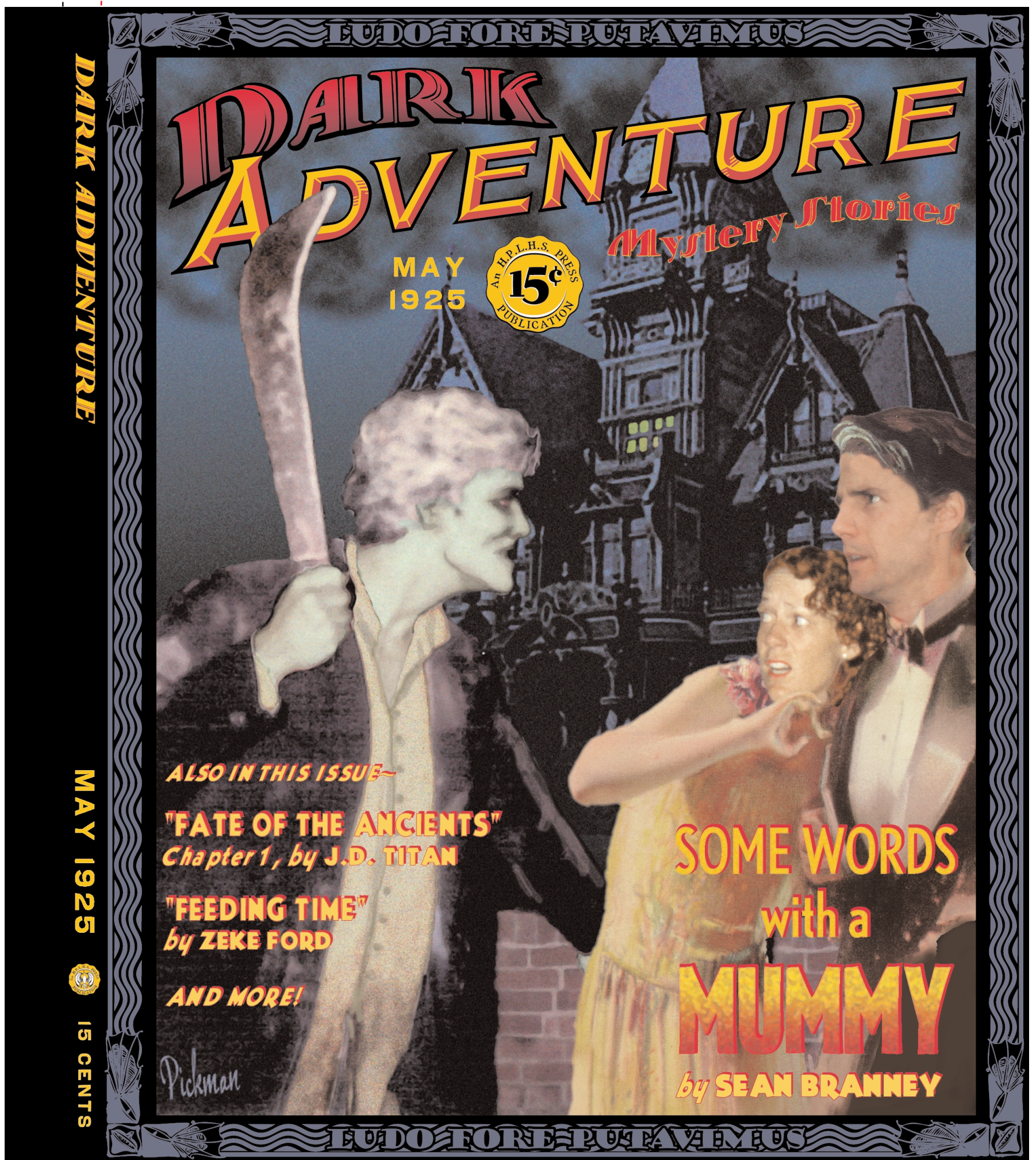
For perfect bound magazines

Print on glossy white paper, if possible.
Score on the variously colored dashed lines.
Trim away all white areas of the paper.
Fold prop cover at the scored lines.
Cut off the entire cover of your selected magazine.
Glue the spine of the prop cover to the spine of the magazine.

This HPLHS Prop Document is for entertainment purposes only. Designed and implemented by Andrew Leman. © 2002 by HPLHS. All rights reserved. Permission is hereby granted for the user to print copies for his/her personal use in role-playing games. No other permission is granted, and any commercial or illegal use of this digital file or the prop you can make with it is ENTIRELY PROHIBITED.

Please do not distribute this document. It is available from www.cthulhulives.org

Questions? Ask them. andrew@ahleman.com



PULP MAGAZINE COVER

This vintage-style prop cover can be attached to a current issue of *Weird Tales*, although it should also fit any of a number of other magazines. The technique for finishing it depends on whether the magazine you're attaching it to has a stapled spine (aka "saddlestitched") or a thick glued spine (aka "perfect bound").

For saddlestitched magazines (e.g. *Weird Tales*)

Print on glossy white paper, if possible.
Trim away left edge of paper at the red dashed line.
Trim away other white areas of the paper.
Cut off most of the cover of your selected magazine, leaving behind a flap about a half inch wide at the spine.
Glue the left edge of the prop cover to the magazine's cover flap.

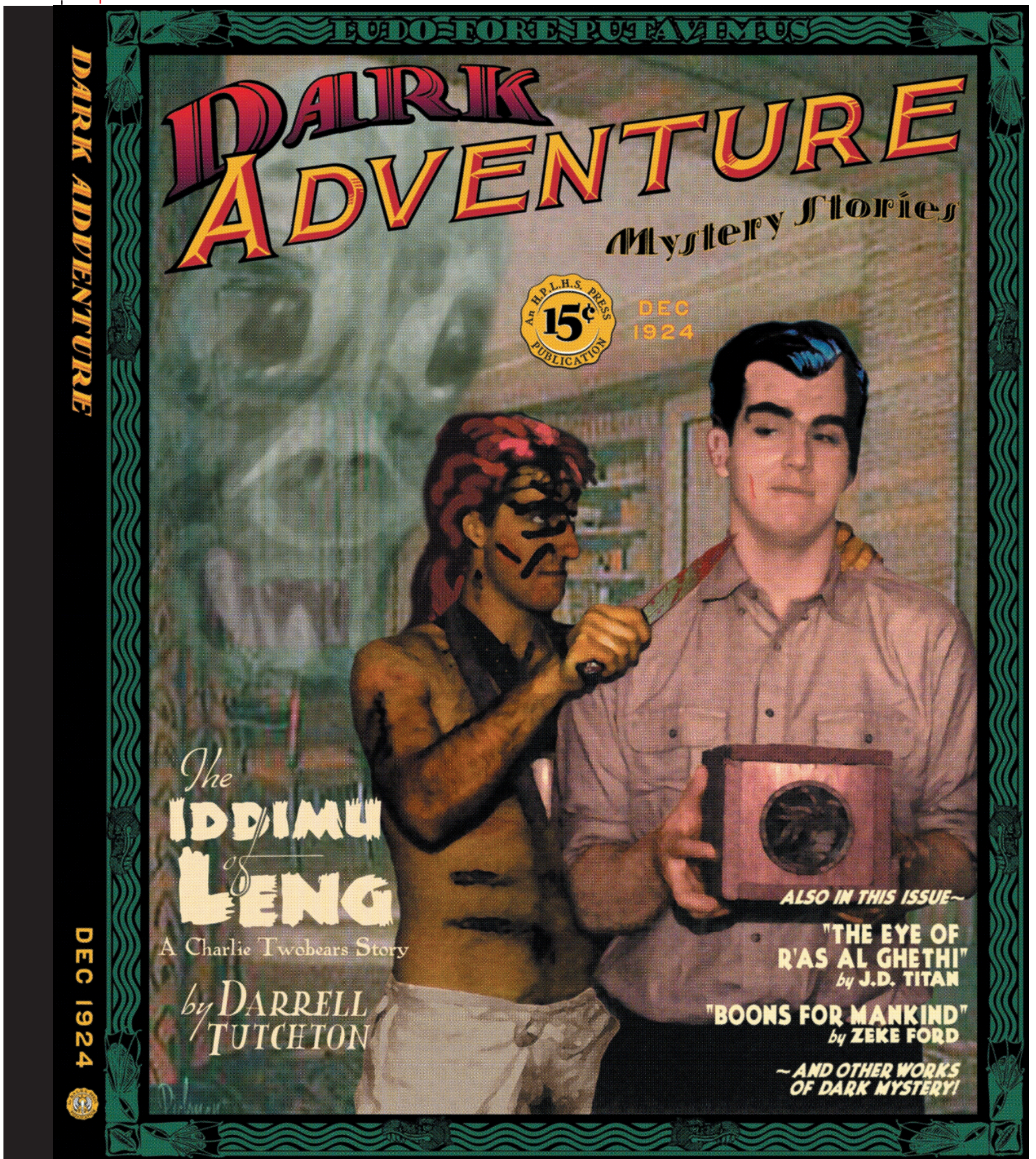
For perfect bound magazines

Print on glossy white paper, if possible.
Score on the variously colored dashed lines.
Trim away all white areas of the paper.
Fold prop cover at the scored lines.
Cut off the entire cover of your selected magazine.
Glue the spine of the prop cover to the spine of the magazine.

This HPLHS Prop Document is for entertainment purposes only. Designed and implemented by Andrew Leman. © 2002 by HPLHS. All rights reserved. Permission is hereby granted for the user to print copies for his/her personal use in role-playing games. No other permission is granted, and any commercial or illegal use of this digital file or the prop you can make with it is ENTIRELY PROHIBITED.

Please do not distribute this document. It is available from www.cthulhulives.org

Questions? Ask them. andrew@ahleman.com



PULP MAGAZINE COVER

This vintage-style prop cover can be attached to a current issue of *Weird Tales*, although it should also fit any of a number of other magazines. The technique for finishing it depends on whether the magazine you're attaching it to has a stapled spine (aka "saddlestitched") or a thick glued spine (aka "perfect bound").

For saddlestitched magazines (e.g. *Weird Tales*)

Print on glossy white paper, if possible.
Trim away left edge of paper at the red dashed line.
Trim away other white areas of the paper.
Cut off most of the cover of your selected magazine, leaving behind a flap about a half inch wide at the spine.
Glue the left edge of the prop cover to the magazine's cover flap.

For perfect bound magazines

Print on glossy white paper, if possible.
Score on the variously colored dashed lines.
Trim away all white areas of the paper.
Fold prop cover at the scored lines.
Cut off the entire cover of your selected magazine.
Glue the spine of the prop cover to the spine of the magazine.

This HPLHS Prop Document is for entertainment purposes only. Designed and implemented by Andrew Leman. © 2002 by HPLHS. All rights reserved. Permission is hereby granted for the user to print copies for his/her personal use in role-playing games. No other permission is granted, and any commercial or illegal use of this digital file or the prop you can make with it is ENTIRELY PROHIBITED.

Please do not distribute this document. It is available from www.cthulhulives.org

Questions? Ask them. andrew@ahleman.com



PULP MAGAZINE COVER

This vintage-style prop cover can be attached to a current issue of *Weird Tales*, although it should also fit any of a number of other magazines. The technique for finishing it depends on whether the magazine you're attaching it to has a stapled spine (aka "saddlestitched") or a thick glued spine (aka "perfect bound").

For saddlestitched magazines (e.g. *Weird Tales*)

Print on glossy white paper, if possible.
Trim away left edge of paper at the red dashed line.
Trim away other white areas of the paper.
Cut off most of the cover of your selected magazine, leaving behind a flap about a half inch wide at the spine.
Glue the left edge of the prop cover to the magazine's cover flap.

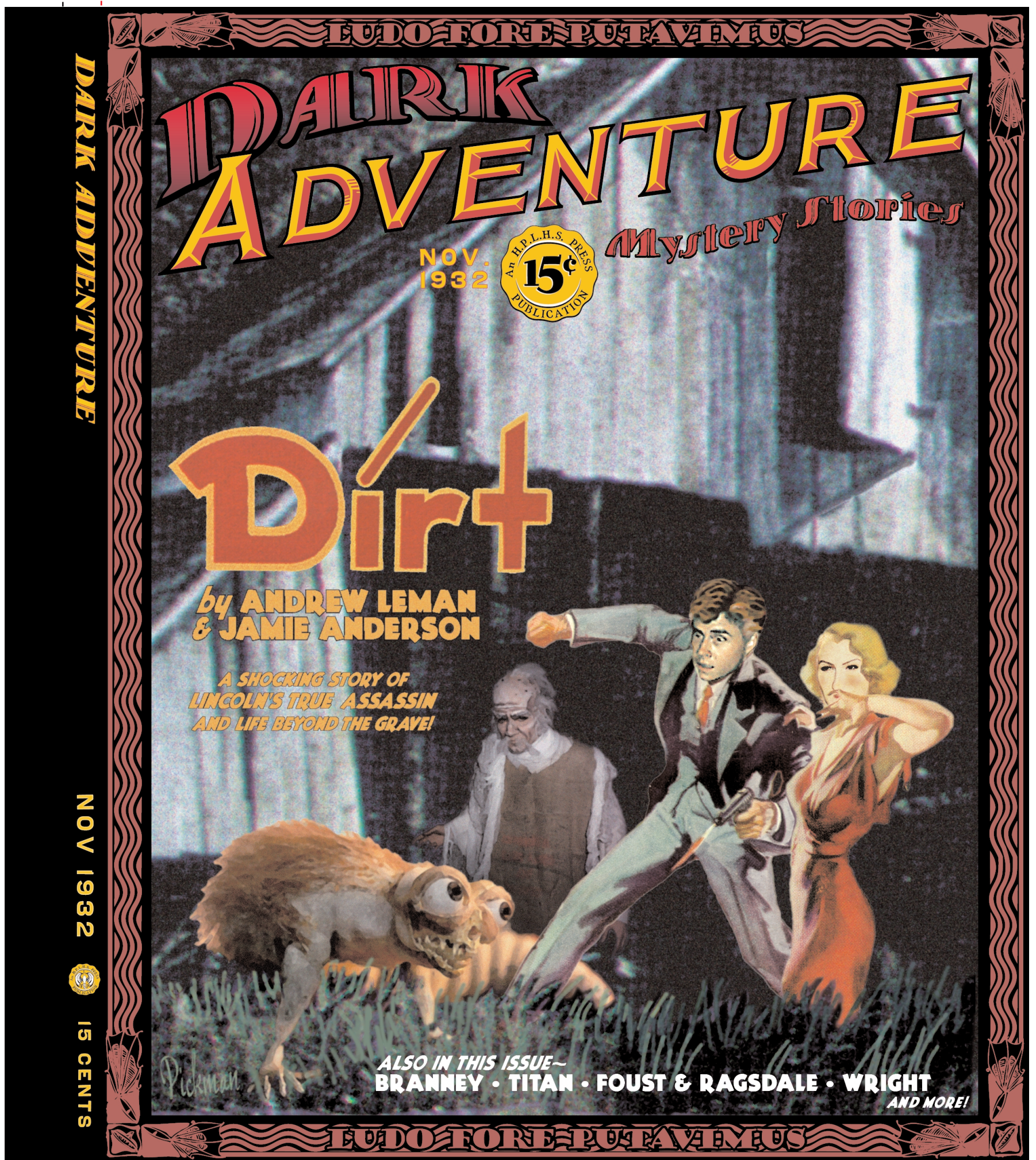
For perfect bound magazines

Print on glossy white paper, if possible.
Score on the variously colored dashed lines.
Trim away all white areas of the paper.
Fold prop cover at the scored lines.
Cut off the entire cover of your selected magazine.
Glue the spine of the prop cover to the spine of the magazine.

This HPLHS Prop Document is for entertainment purposes only. Designed and implemented by Andrew Leman. © 2002 by HPLHS. All rights reserved. Permission is hereby granted for the user to print copies for his/her personal use in role-playing games. No other permission is granted, and any commercial or illegal use of this digital file or the prop you can make with it is ENTIRELY PROHIBITED.

Please do not distribute this document. It is available from www.cthulhulives.org

Questions? Ask them. andrew@ahleman.com



PULP MAGAZINE COVER

This vintage-style prop cover can be attached to a current issue of *Weird Tales*, although it should also fit any of a number of other magazines. The technique for finishing it depends on whether the magazine you're attaching it to has a stapled spine (aka "saddlestitched") or a thick glued spine (aka "perfect bound").

For saddlestitched magazines (e.g. *Weird Tales*)

- Print** on glossy white paper, if possible.
- Trim** away left edge of paper at the red dashed line.
- Trim** away other white areas of the paper.
- Cut off** most of the cover of your selected magazine, leaving behind a flap about a half inch wide at the spine.
- Glue** the left edge of the prop cover to the magazine's cover flap.

For perfect bound magazines

- Print** on glossy white paper, if possible.
- Score** on the variously colored dashed lines.
- Trim** away all white areas of the paper.
- Fold** prop cover at the scored lines.
- Cut off** the entire cover of your selected magazine.
- Glue** the spine of the prop cover to the spine of the magazine.

This HPLHS Prop Document is for entertainment purposes only. Designed and implemented by Andrew Leman. © 2002 by HPLHS. All rights reserved. Permission is hereby granted for the user to print copies for his/her personal use in role-playing games. No other permission is granted, and any commercial or illegal use of this digital file or the prop you can make with it is ENTIRELY PROHIBITED.

Please do not distribute this document. It is available from www.cthulhulives.org

Questions? Ask them. andrew@ahleman.com